



IWCA Going Forward

Proposal restructuring organisation IWCA
“IWCA 2.0”

IWCA Executive Committee / 10th April 2024

Content



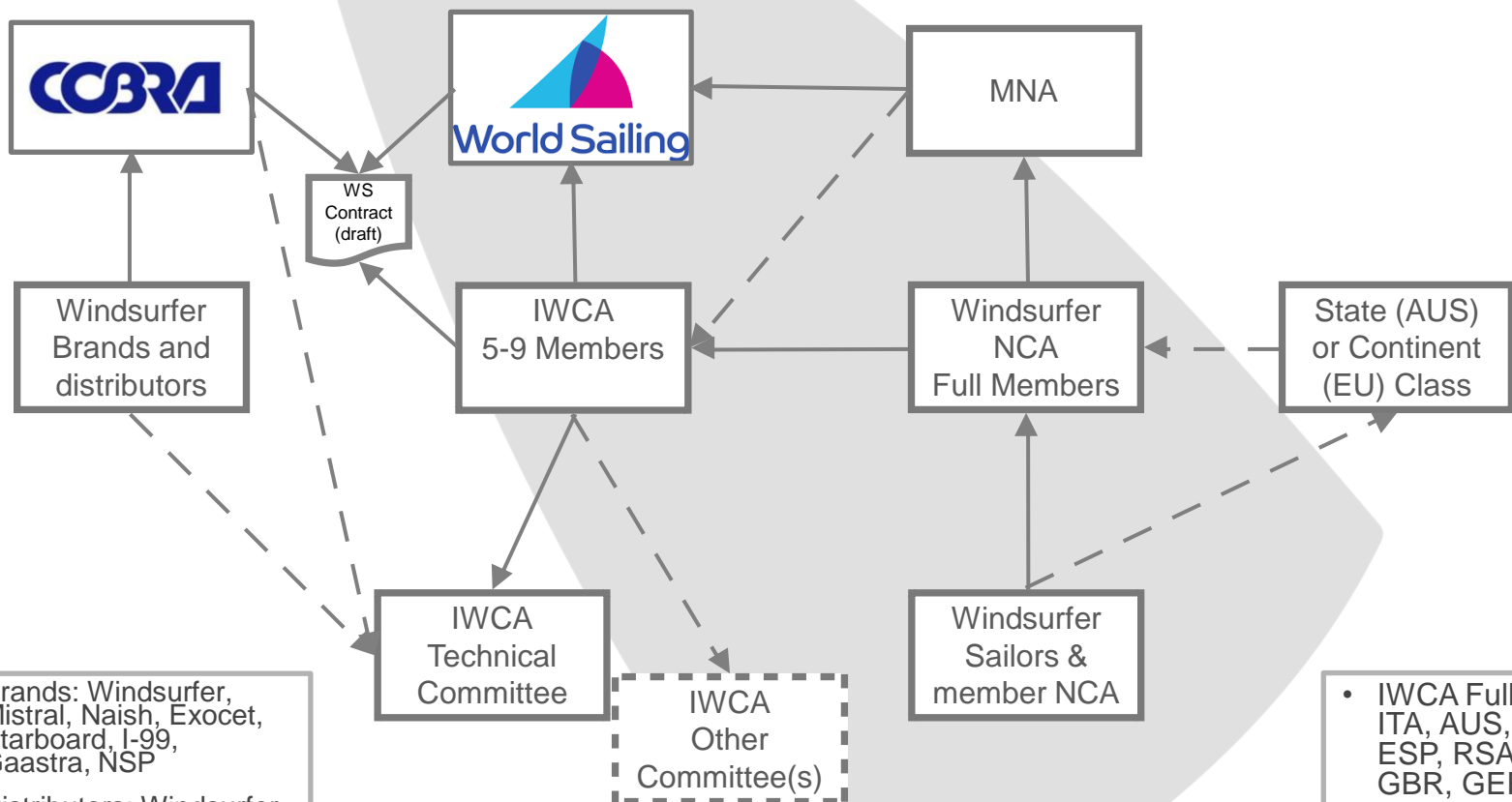
- IWCA Aim and existence
- Current IWCA organization
- Main problems and issues IWCA
- Proposed IWCA organization 2.0

IWCA Aim and existence



- The IWCA shall: (constitution)
 - Encourage, promote, and develop International Windsurfer class sailing throughout the world;
 - Maintain the one-design character of the International Windsurfer class;
 - Coordinate and manage its rights, duties, and responsibilities, provide a structure of management, and develop action conducive to the exchange of information among the Windsurfer sailors, coaches, and suppliers;
 - Cooperate with the WS, the continental and regional sailing federations and associations, the National Sailing Authorities, the National International Windsurfer class Associations, the other International Class Associations, and the regatta organizers;
 - Promote and co-ordinate national, regional and International Windsurfer class regattas
- The IWCA is a class that serves in the interest of Windsurfer Sailors and these are represented by Full Members
- The IWCA is aiming to be recognized by World Sailing (WS), and the International Windsurfer class shall conform to the jurisdiction and requirements of the WS. For this a tri-partite between the IWCA, Manufacturer(Cobra) and World Sailing will be in place
- The IWCA constitution and other regulations and policies are binding on all members.

Current IWCA organization



- Brands: Windsurfer, Mistral, Naish, Exocet, Starboard, I-99, Gaastra, NSP
- Distributors: Windsurfer Europe (EU), Windgenuity (AUS), Windsurfing Japan (JPN), Cobra (Rest of the World), Mistral, Naish, Exocet, Starboard, I-99, Gaastra, NSP

- IWCA Full Members: ITA, AUS, FRA, NED, ESP, RSA, USA, GBR, GER, FIN, THA, JPN, FIJ, CAN
- IWCA Aspirant Members: MEX, DEN, PRT, SWI, AUS, GRE, NZL, CZE, MLT, NOR, SWE

Main problems and issues IWCA



- Limited time EC members due to their other jobs/activities
- Distrust EC Members, commercial parties and Full Members with large number of Sailors
- Expectations of tasks IWCA, unclarity who does or doesn't what, lack of time and communication to Full Members, Sailors, Commercial and other IWCA involved parties
- Limited IWCA procedures, not automated and/or not fully supported
- Commercial parties want to be part of the IWCA Executive Committee. This based on the letter "Proposal of a Revised Constitution for IWCA with Immediate Effect" dated 2/3/2024 and on-going discussion on this topic within the previous EC.
- Administration, finance handover and tax rules
- Limited budget
- No payment gateway, no full control over the website
- Unclear expectations commercial parties involved
- The secretarial function is a time-consuming function and should be done consistently on a daily basis
- Under review status World Sailing: No WS contract and International Measurer. Draft WS contract is ready for signing
- Aging of the Windsurfers and attract young/youth Windsurfers to the class

Proposed IWCA organization “2.0”



Starting points

- The IWCA Executive Committee will be represented by the Full Members of the continents.
- The Full Members of **each continent** will appoint a representative for the IWCA Executive Committee. The continent representing the biggest number of Windsurfer Sailors shall appoint a maximum of three representatives for the IWCA Executive Committee. The continent representing the second biggest number of Windsurfer Sailors shall appoint a maximum of two representatives for the IWCA Executive Committee. The other continents will appoint one representative of the continent. This will be (re)confirmed and/or ratified at the yearly IWCA AGM.
- The IWCA recognize that the Windsurfer Manufacturer, Brands and Distributors are important. These parties should have one position as a Commercial Delegate in the IWCA Executive Committee and shall be appointed by the Manufacturer/Brands/Distributors. This position is common at other World Sailing Classes like ILCA
- The Executive Secretary is a crucial and time-consuming position and should be out-sourced as a paid function to have continuity on all administrative operations of the IWCA
- The Commercial Delegate or any other paid staff member of the IWCA shall not be eligible to hold the position as a President of the IWCA.
- The IWCA Executive Committee members shall comply with the IWCA Conflict of Interest Policy.
- Beside a Technical Committee, who is primarily responsible for the Class Rules an Event Committee will be part of the IWCA and primarily responsible for the organizing the Worlds & European Championships

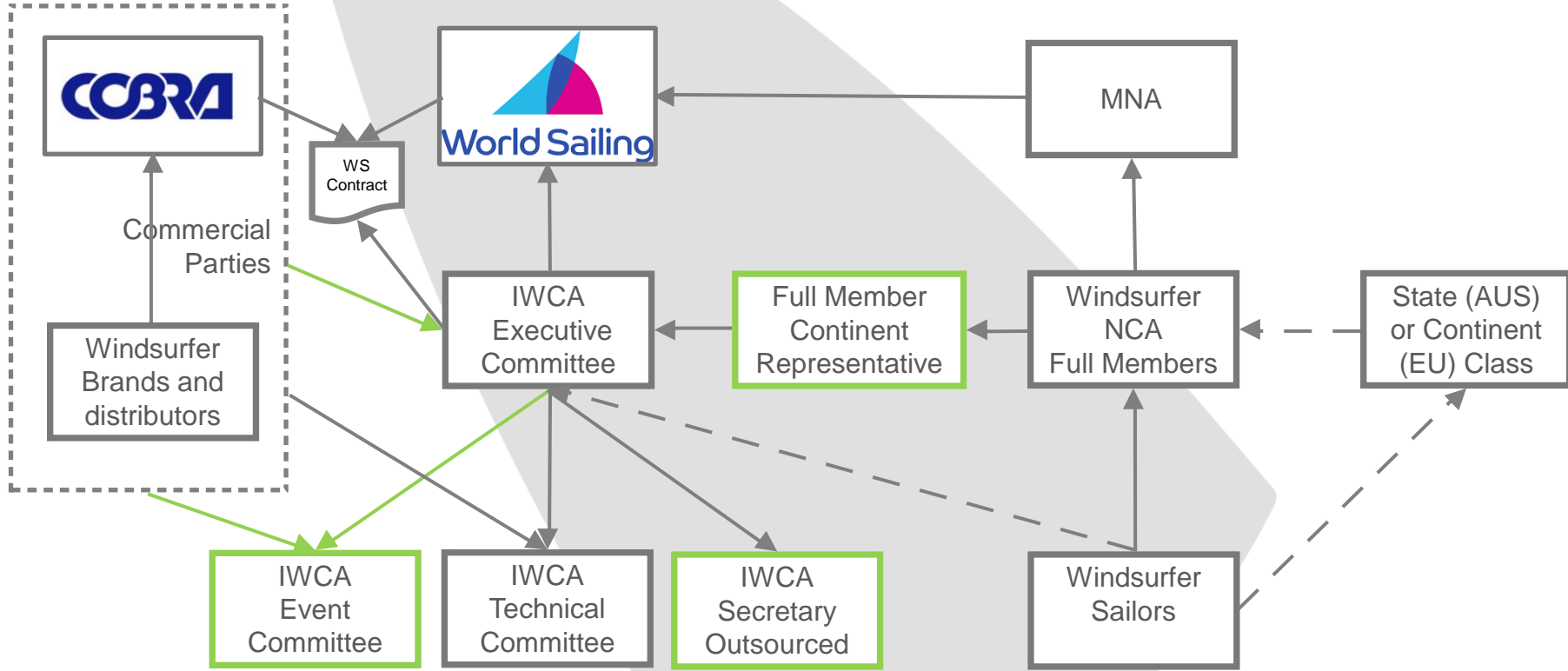
Proposed IWCA organization “2.0”



Key changes & Innovation

- The IWCA Exec committee role will be defining and executing an agreed (voted by FM's) future 3-5 year strategic game plan that addresses the following key themes:
 - Geographic growth spread and increase of NCA's and sailor numbers
 - Attract youth into the class (secure global sponsor)
 - Maintain and nurture the “Multibrand” concept
- The IWCA Executive Committee members to be selected on merit (knowledge, skills & attributes) in alignment to delivering the required IWCA strategic results
- The IWCA Executive Committee to define 'standard operating procedures' (SOP's) to be cascaded at a continental and country level to ensure consistency in for e.g.
 - Application for and transparent criteria driven selection of continental & national sailing events
 - Hosting/Execution of a sailing event
 - Prize/awards categories
 - Adherence and alignment to WS & WC sailing rules
 - NOR & SI's formats
 - Weight division (men and women) formats based on entry numbers
 - Youth support and programs
 - Sustainability / environmental policies
- Closing the IWCA a.s.d in Italy and start a new non-profit association in the Netherlands

Proposed IWCA organization “2.0”



- Brands: Windsurfer, Mistral, Naish, Exocet, Starboard, I-99, Gaastra, NSP
- Distributors: Windsurfer Europe (EU), Windgenuity (AUS), Windsurfing Japan (JPN), Cobra (Rest of the World), Mistral, Naish, Exocet, Starboard, I-99, Gaastra, NSP

Green = new IWCA

- IWCA Full Members: ITA, AUS, FRA, NED, ESP, RSA, USA, GBR, GER, FIN, THA, JPN, FIJ, CAN
- IWCA Aspirant Members: MEX, DEN, PRT, SWI, AUS, GRE, NZL, CZE, MLT, NOR, SWE